



COMPUTER SYSTEMS, INC.

11719 NE 95th STREET • SUITE D
VANCOUVER, WA 98682-2444
TELEPHONE 360/254-8688
FAX 360/254-5435
www.deltacompsys.com

FOR IMMEDIATE RELEASE

Delta's new Tuning Wizard simplifies and speeds the closed loop tuning process

January 28, 2005 – Vancouver, WA – Delta Computer Systems announces the “Tuning Wizard”, a new RMC100 multi-axis motion controller feature that speeds up and simplifies the process of computing optimal gains for closed-loop motion control.

The Tuning Wizard helps select appropriate gains for a position axis—answering the often asked question, “Where do I begin?” This-easy-to use RMCWin software tool guides the user through a step-by-step process to import axis data. The Tuning Wizard then uses this information to build a set of mathematical system models and determines which model best fits the real system. The Tuning Wizard next prompts the user to set the desired system response between “conservative and aggressive” using a single slider bar and computes the optimum PID and feed forward gains.

The user can quickly and easily determine optimal machine performance by comparing the axis motion resulting from various slider bar settings visually with RMCWin software graphics tools. Typical results, using the Tuning Wizard, are better tuning in a fraction of the time as compared to traditional “trial and error” methods, even for users with a high level of motion expertise.

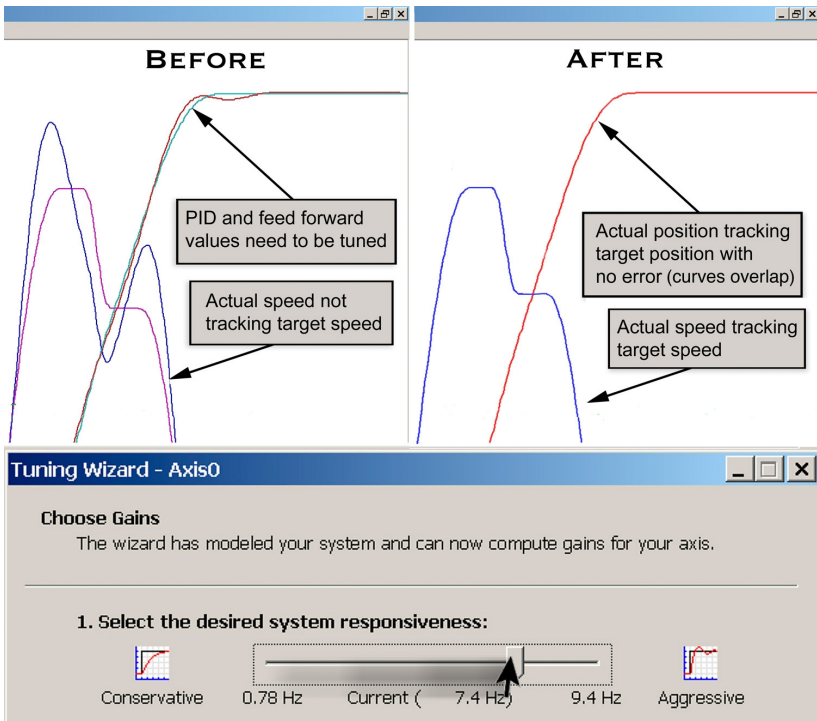
“Delta has developed this motion control productivity tool for fluid power and servo motor applications.” stated Peter Nachtwey, President of Delta Computer Systems, Inc. “Using the Tuning Wizard, OEMs and systems integrators will have machines running more smoothly, and do it in less time. Smoother motion will result in more throughput and longer machine life because of less overall wear and tear.”

The Delta Tuning Wizard is another motion control feature advancing the capabilities of Delta's RMC Family of motion controllers and product accessories.

About Delta Computer Systems

For more than 20 years, Delta has been a supplier of motion controllers, color sensors, and other industrial products that enable OEMs and integrators to build better machines and get to market quickly. For more information, see www.deltamotion.com or contact Bill Savela, Delta Computer Systems, Inc. 11719 NE 95th Street, Suite D, Vancouver, WA 98682. phone 360-254-8688, fax 360-254-5435, or email bsavela@deltamotion.com

Editor: Your personnel may indicate Tuning Wizard for inquiry identification.



Delta Tuning Wizard Tools for Quicker, Smoother Axis Tuning